

BI-METAL HAND HACKSAW BLADE

Rev. 00

1. PRODUCT:

Hand hacksaw blade - N° Cat. BS1218, BS1224 and BS1232.

2. DESCRIPTION:

Unique Bi-metal steel hand hacksaw blade.

Picture 1. Product illustrative image



3. APPLICABILITY:

General use product, suitable for manual use on workbench or other place for cutting operations of several types of materials, used by mechanics, tool makers, plumbers and electricians, in any working condition.

4. STANDARDS:

ISO 2336-1
BS 1919
NBR 5903
NBR 6215
NBR 6662
ASTM A600

5. PACKAGE:

Product available in card with 2 blades, plastic tube with 10 or 50 blades or acrylic box with 50 blades.

6. TECHNICAL CONSTRUCTION:

Starrett Unique Bi-metal hand hacksaw blades are manufactured with alloy steel body and high-speed steel tooth, are punched, milled, setting, hardened/tempered and painted in Starrett standard yellow color, using water-based paint and red color printing without addition of heavy metals, in strict accordance with the Starrett Quality standard (ISO 9000).
Flexible blade, shatterproof during use.

7. RAW MATERIAL:

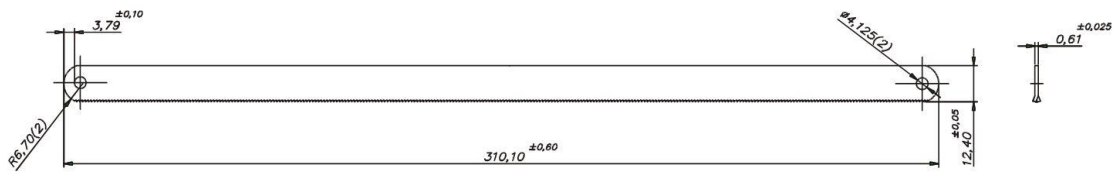
Body hardness: From 41 to 51 HRC

Teeth hardness: From 65 to 67 HRC

8. DIMENSIONS



Picture 2. General dimensions of the finished product



9. CUTTING BOARD:

| Length x Width x Thickness | TPI (teeth per inch) | Cross section to be cut | | |
|-------------------------------|-------------------------|-------------------------|---------------|------------------|
| | | Metal | | PVC (bundles) |
| | | Structural Profile | Solid | Wood |
| 12" x 1/2" x 0.024" | 18 | From 1/4" up | From 5/32" up | From 1/8" up |
| 300 x 13 x 0,60 mm | 24 | 5/64" – 1/4" | 5/32" to 3/8" | 1/8" or less |
| | 32 | 5/64" or less | 5/32" or less | 1/8" or less |

10. SAFETY:

- Follow all safety instructions shown in the operation catalog;
- Recognize and read safety and warning signs such as Danger, Warning and Caution;
- Follow the saw blade installation instructions on the specific make and model of the band saw machine requiring a blade change
- Necessary safety equipment: gloves, safety glasses, safety shoes and hearing protection;
- Follow the manual hand hacksaw blade installation instructions;
- Decrease blade tension and then remove blade;
- Observe the cutting direction when installing the blade;
- Apply appropriate tension to the blade.

